



Essential LED MiniFlood BVP150 G

Essential LED MiniFlood comes with a compact and sturdy design. It has a high-quality housing and corrosion-proof powder coating, suitable for general outdoor application. High efficiency designed with latest LED technology, achieves substantial energy savings comparing to conventional floodlights.

Benefits

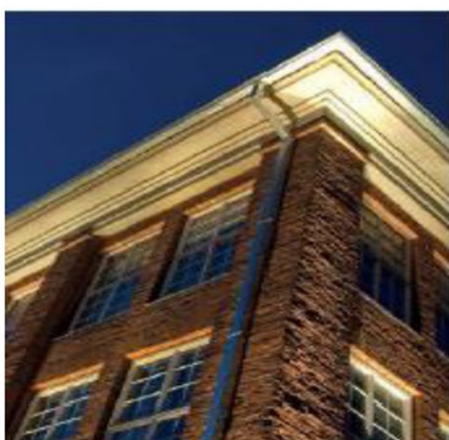
- Ideal replacement for conventional halogen floodlights with substantial energy savings
- Sturdy design for unique design and feel of luminaire
- Reliable quality and brand promise guarantee hassle free operations for outdoor application

Features

- 3000K (WW), 6500K (CW)
- 10W/20W/30W/50W
- 110-277V~
- Up to 85 lm/W system efficacy
- 30 k hours lifetime (1 year warranty)
- PF > 0,9
- -20°C < Ta < 40°C
- Water Stop (anti-siphon) Cable
- Complies IEC60598, CB, RETILAP, IRAM

Applications

Amenity/Security/Landscape/Plaza square/
Parking/Architectural lighting



Essential LED MiniFlood BVP150 G2



Specifications

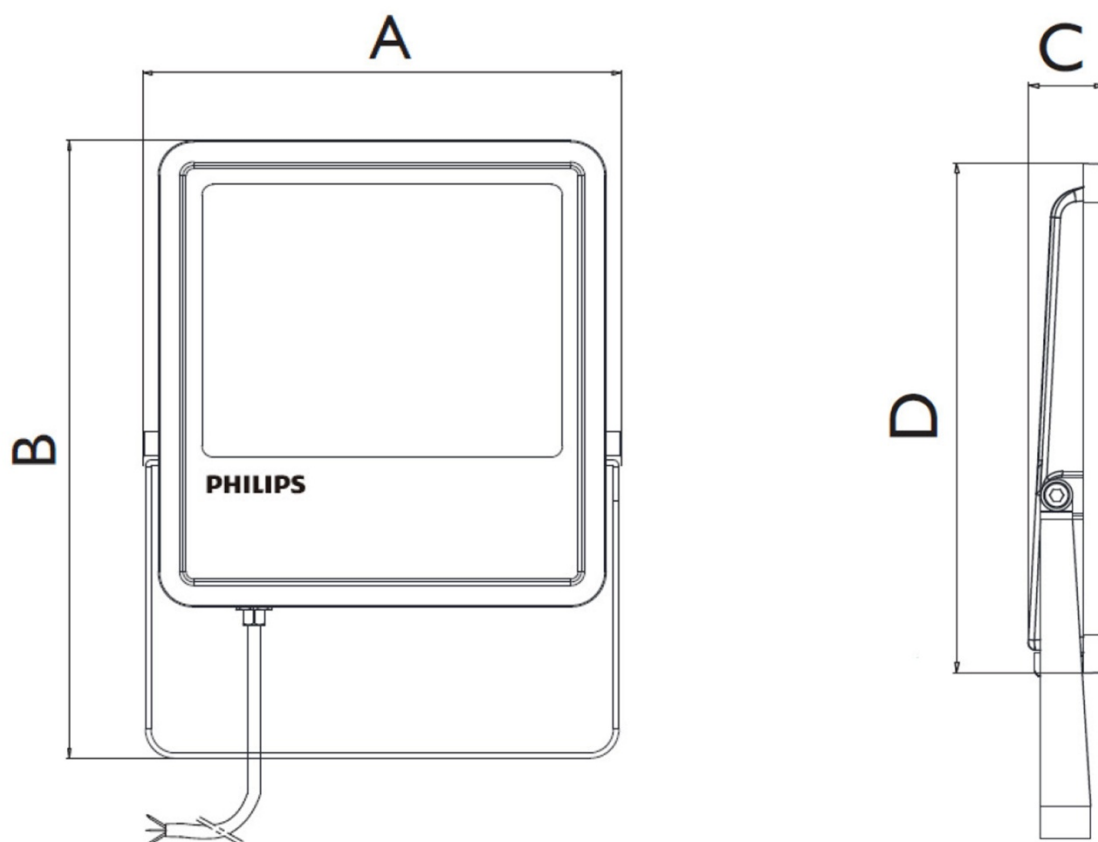
Type	10W	20W	30W	50W
lumen output	850 lm	1700 lm	2550 lm	4250 lm
Power	10W	20W	30W	50W
SDCM	<6			
CRI	>80			
CCT	3000K, 6500K			
Voltage	110-277V~ 50/60Hz			
Surge protection	1kV / 2kV			
LED driver	Fixed output (Integrated with luminaire)			
Connection	0,15m flying cable			
Materials and finishing	Die-cast aluminum housing (black), Tempered glass			
Lifetime	30.000 hours (L60B50@25°C)			
Working Temp.	- 20°C < Ta < +40°C			
Dimensions W x H x D(mm)	99x89x26	115x103x28	148x139x29	185x177x32
Electrical Class	Class I			
IP rating	IP65			
IK rating	IK06			
Certifications	CB, RETILAP, IRAM			



Essential LED MiniFlood BVP150 G2



Dimensions (unit: mm)



Model BVP150 G2	10W	20W	30W	50W
A	99	115	148	185
B	127	143	182	231
C	26	28	29	32
D	89	103	139	177

